



Government of **Western Australia**  
**North Metropolitan Health Service**  
Mental Health, Public Health and Dental Services



Acknowledgment of the Take 5 concept  
developed by RPH

# Approval Process for Human Research Projects NMHS MH Research Ethics and Governance Office (REGO) (For Researchers)

Developed by: Camelia Zota  
Endorsed by: NMHS MH REGO  
Date: 31 July 2018



# Conducting human research projects in WA Health

All human research conducted in WA Health is governed by the **WA Health Research and Governance Policy and Procedures 2012**. The policy and procedures were introduced in 2012 to ensure that all human research:

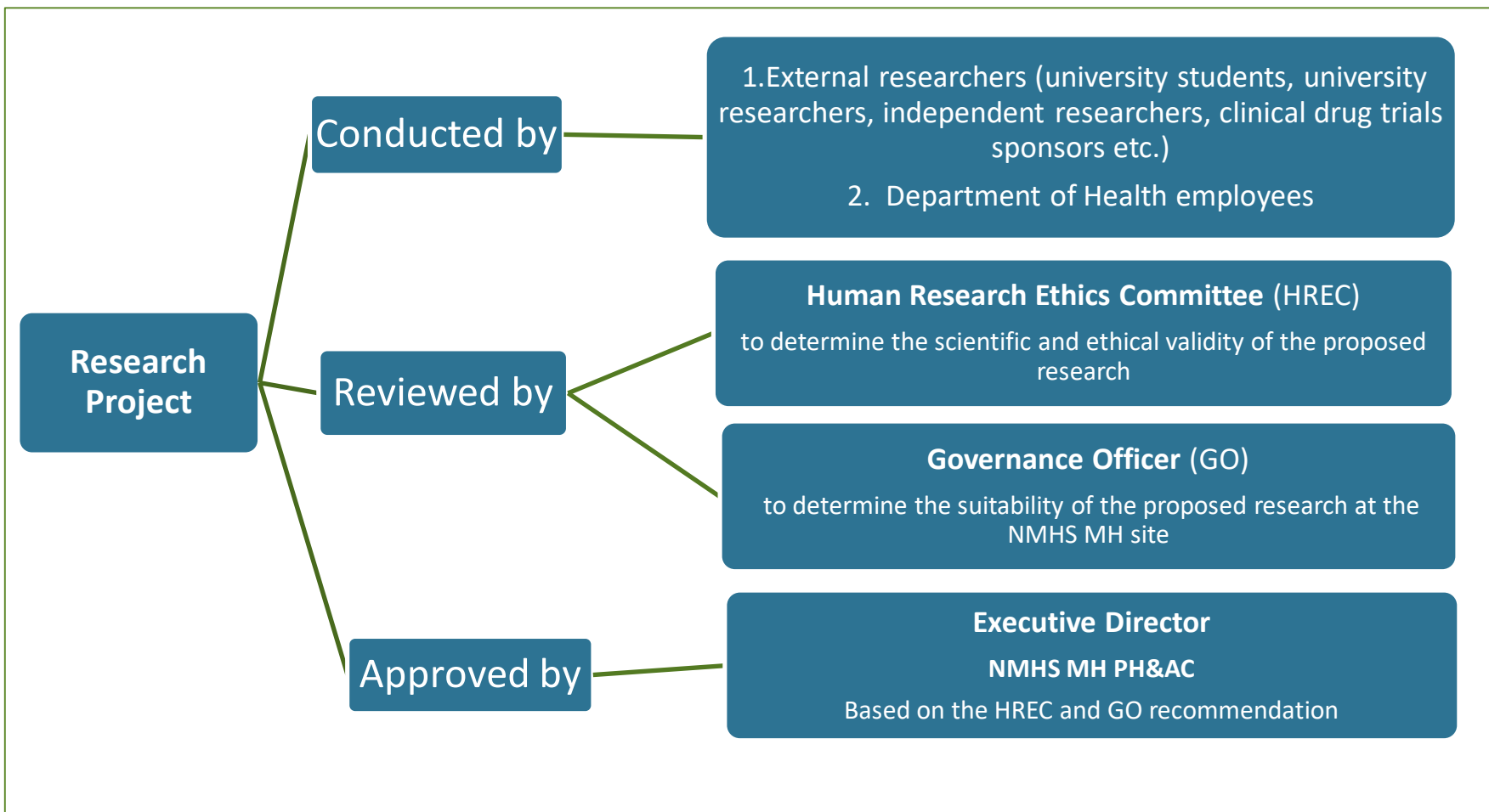
- is ethically and scientifically sound
- is conducted by authorised personnel with appropriate professional qualifications, credentials and institutional approvals
- is conducted in a safe and responsible manner according to regulatory and professional standards and complies with relevant national and State legislation, guidelines and codes of conduct
- the ethical and governance review and monitoring is transparent, accountable, minimises duplication, risk and is conducted in an efficient and timely manner
- is authorised by the chief executive or delegate before commencement.

The policy and procedures applies to:

- all persons employed in WA Health (including visiting medical officers, visiting health professionals, contractors, consultants, agents and volunteers)
- non-WA Health employees (including clinical and non-clinical university academics) who propose to undertake, manage, review and govern human research, and/or access WA Health participants, their tissue or their data.



# Human Research Approval Process





# What is the researcher required to do?

- **Contact and obtain** confirmation from the Service Director/Program Manager that the project is supported at the site
- **Create** account in RGS (For more information on RGS please see NMHS MH REGO Package 5: Research Governance Service (RGS): What is it and how does it work?)
- **Submit** the project for review and approval to the Research Ethics and Governance Office (REGO) via RGS (i.e. submit the Ethics Form, Project Protocol, Information Sheet and Consent Form, Flyers, Questionnaires, Tests, Site Specific Assessment Form and Budget Form)
- **Conduct** the project in a ethical manner once approved
- **Comply** with all the approval requirements



## Where can I learn more?

More information about the human research approval process in NMHS MH can be found on the North Metropolitan Health Service Mental Health Research Ethics and Governance Office (REGO) website :

<http://www.nmahsmh.health.wa.gov.au/ethics/index.cfm>

or

by contacting us:

Executive officer: [Camelia.Zota@health.wa.gov.au](mailto:Camelia.Zota@health.wa.gov.au)

Chair: [Flavie.Waters@health.wa.gov.au](mailto:Flavie.Waters@health.wa.gov.au)

Phone: 93476502

**Include this link to evaluation form:**

Please complete the 1 minute evaluation of this Take 5 education [HERE](#).